



Airvac

The **world leader** in vacuum sewer collection technology.

Advanced vacuum sewer components for

extreme cold temperatures

A brand of
Aqseptence Group

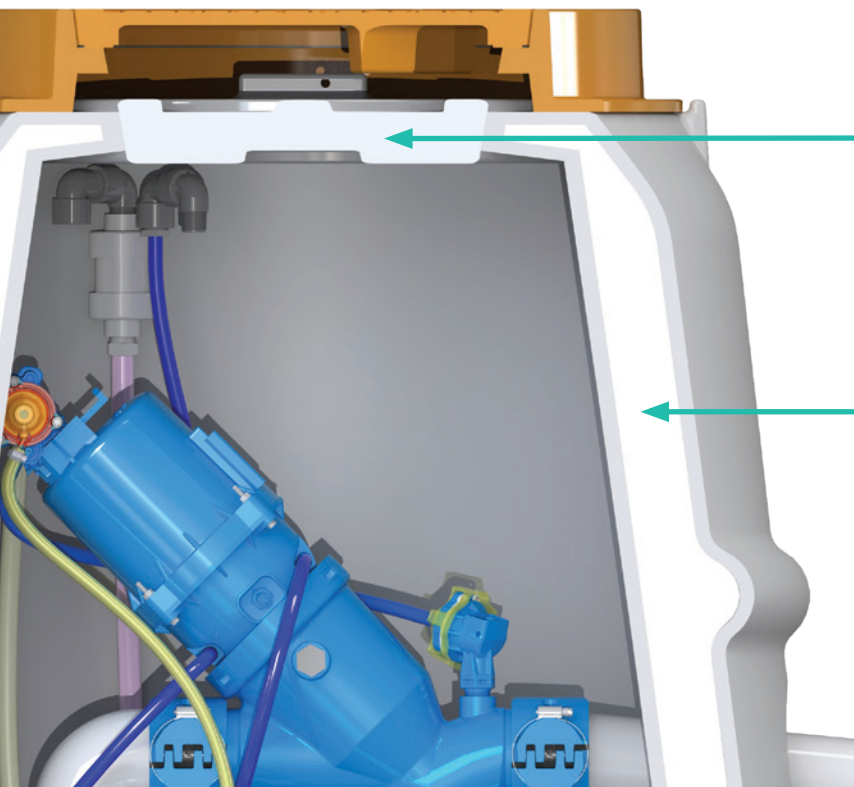


2-Piece Cold Weather Pit

Airvac's Cold Weather Valve Pit contains an insulated lid insert and an insulation layer within the pit wall and is available for areas where extreme cold temperatures are expected.



The Airvac cold weather pit is available in 6ft, 8ft, and 10ft depths.



Insulated Pit Lid

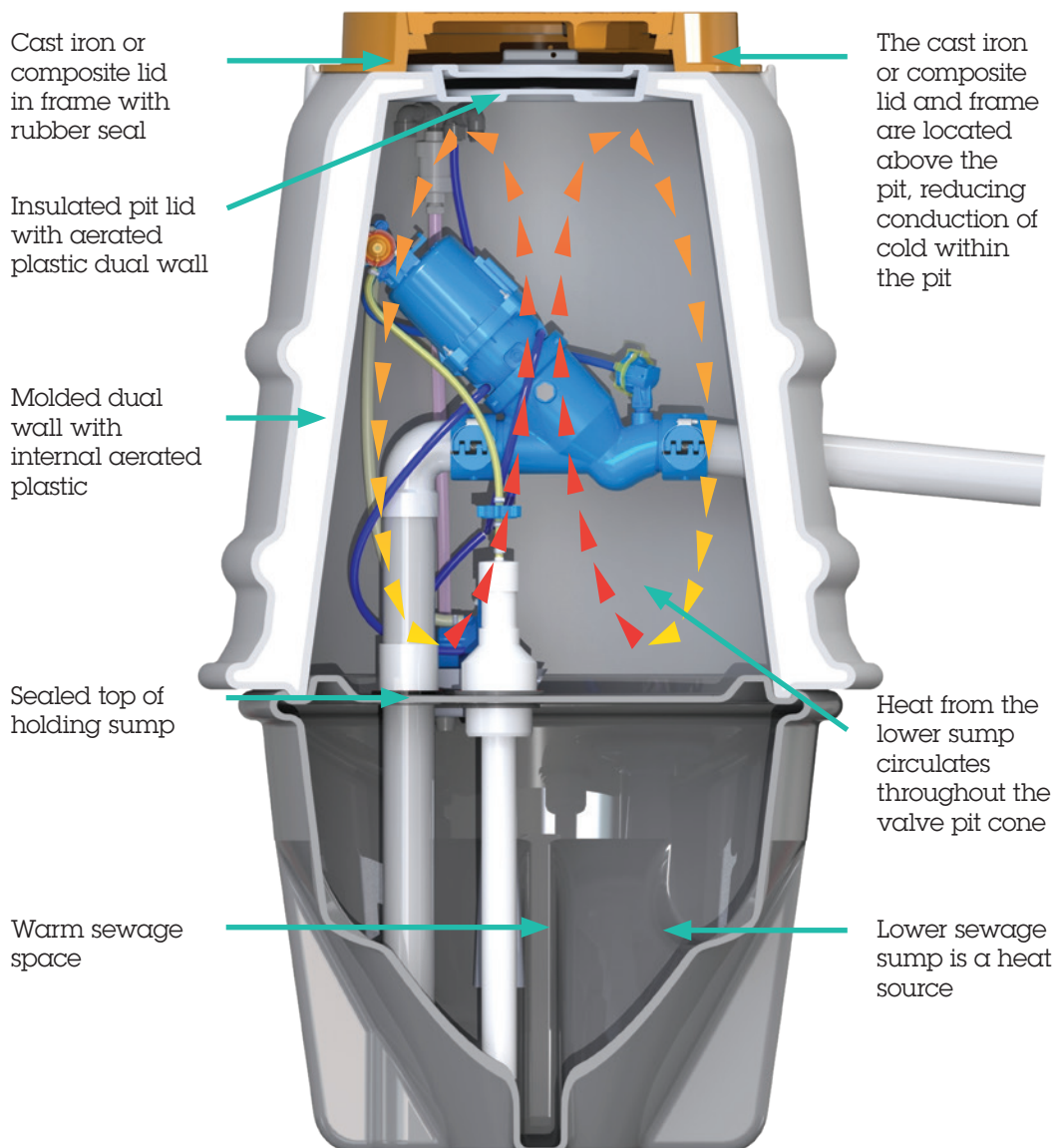
The insulated pit lid has an aerated plastic dual wall. Dead air acts as an insulator, retaining ground heat and keeping outside cold from entering the valve pit.

Valve Pit Insulation

The insulated valve pit has a molded dual wall with internal aerated plastic for insulation, plus an air gap layer to reduce conduction.

Airvac's 2-piece cold weather valve pit is an all PE valve pit where the cone top includes a double wall with an embedded layer of insulation and an insulated lid insert under the standard cover.

Principles of the 2-Piece Cold Weather Pit Design





3" (78mm) Vacuum Valve

**Durable. Reliable.
Refined.**

The Airvac 3" (78mm) vacuum valve is pneumatically controlled and designed for handling 3" solids. The valve is made of glass filled polypropylene and all parts are made of corrosion resistant materials. A high flow coefficient (Cv) keeps friction losses to an absolute minimum.



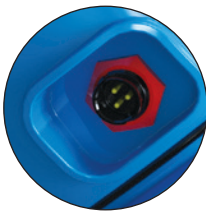
No Surge Suppressor Is Needed

A surge suppressor is not required when the HP Controller is used in conjunction with our new SBPA sump breather.

Our latest vacuum valve now features a full rubber tapered plunger that will flex and prevent ice buildup. There is also no metal nut and shaft on the seat end, and a new check valve to prevent freezing.

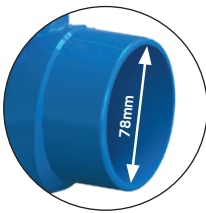
New Patent Pending Vacuum Supply Check Valve Assembly

- High flow
- Delivers high vacuum to the controller
- Does not hold liquid and fully drains - eliminating the potential to freeze
- Large passages prevent blocking
- Simple design is easy to work on
- Has ports for monitoring or chart recorder connections



Built-in Monitoring Port

Airvac's monitoring system easily connects to the vacuum valve.



Larger Inside Diameter

The size of the inside diameter was increased to pass 78mm solids, reducing blockages. The inside diameter now measures 78.8mm, or 3.1 inches, making it the largest inside diameter available.



Revised Rubber Plunger

- Full rubber tapered plunger flexes and prevents ice buildup
- Uses a socket head bolt for firm attachment
- Buna Rubber resists shrinkage due to chemical attack



Airvac HP Controller

Airvac's High Performance (HP) controller is water tolerant, has fewer parts, and is inexpensive to rebuild making the HP controller the most efficient and advanced vacuum valve controller on the market.

Fewer Parts/Improved Materials

In addition to having fewer parts, the HP controller features higher quality materials. Combined, this is expected to result in a longer life expectancy.

Improved Water Tolerance

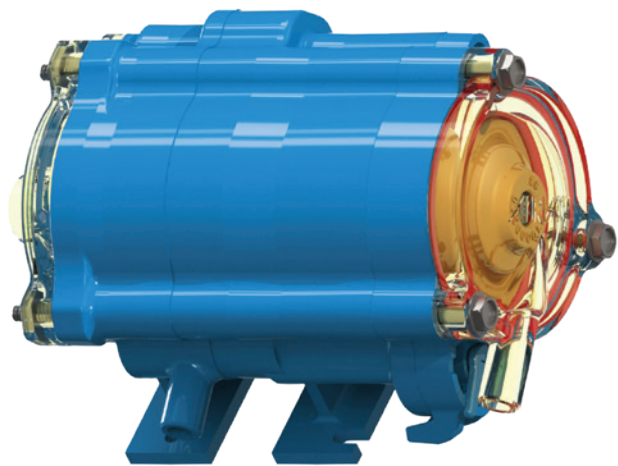
Substantial improvement of tolerance for water which in turn reduces the odds of a hung valve.

Shortened Rebuild Time

Fewer parts and simpler testing procedures result in less time required to rebuild the controller.

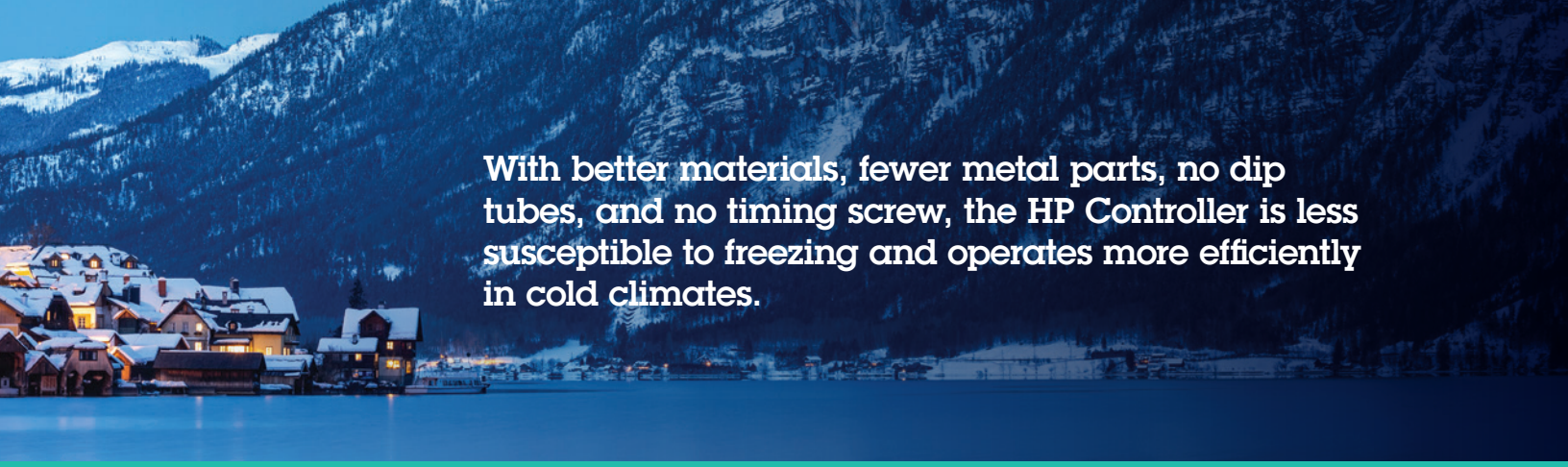
Manual Valve Firing Made Easier

Airvac's new magnetic tool allows the operator to manually open the valve while standing.



Easy Slip Key Mount

Even the coldest of hands can easily detach the HP Controller from the Vacuum Valve for servicing. Simply pull out the slip key and the hose attachments. Done.

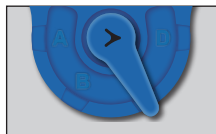
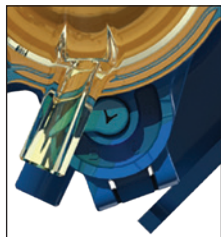


With better materials, fewer metal parts, no dip tubes, and no timing screw, the HP Controller is less susceptible to freezing and operates more efficiently in cold climates.

The HP Controller is the most efficient and advanced vacuum valve controller on the market.

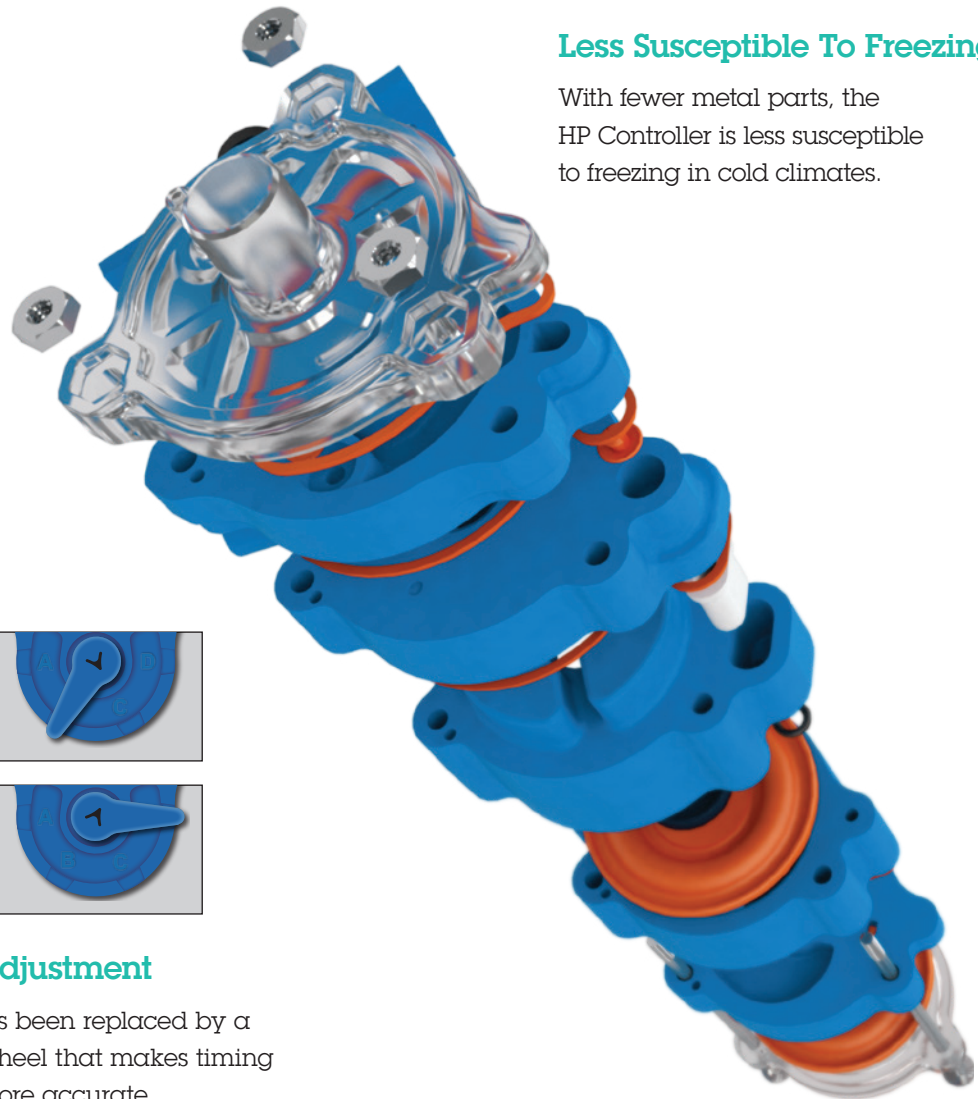
Less Susceptible To Freezing

With fewer metal parts, the HP Controller is less susceptible to freezing in cold climates.



Easier Timing Adjustment

The needle valve has been replaced by a timing adjustment wheel that makes timing much simpler and more accurate.



Let's discuss your solution!

1-800-AIRVAC9 or visit **airvac.com**

We provide FREE cost estimates & system layouts.



Airvac

**A brand of
Aqseptence Group**

4217 N Old US Highway 31, Rochester, IN 46975

airvac.com

Phone: 1 574-223-3980

eMail: info.airvac@aqseptence.com

AV043.0-US-en-REV0921

Airvac® is a registered trademark of Aqseptence Group, Inc.
Copyright © Aqseptence Group, Inc. 2021